



PTO SHAFTS



BASIC PTO SHAFTS
WIDE ANGLE PTO SHAFTS

BASIC PTO SHAFTS

SIPMA PTO shafts are designed to transmit a specific torque from the Power-Take-Off spline shaft of the tractor to the Power-Take-On spline shaft of the machine. SIPMA S.A. makes PTO shafts designed to transmit the torque of the following ranges: 220 Nm, 300 Nm, 460 Nm, 540 Nm, 630 Nm, 680 Nm, 900 Nm, 1200 Nm and 1700 Nm in the basic version, and 680 Nm in wide angle version, in two options:

- with one wide angle joint,
- with two wide angle joints.

BASIC PTO SHAFTS

SIPMA WPT 220	SIPMA WPT 540	SIPMA WPT 900
SIPMA WPT 300	SIPMA WPT 630	SIPMA WPT 1200
SIPMA WPT 460	SIPMA WPT 680	SIPMA WPT 1700

Basic PTO shafts are used when the mutual location of the Power-Take-Off and Power-Take-On spline shafts during continuous works does not result in exceeded 25° of joint breaking angle.

WIDE ANGLE PTO SHAFTS

SIPMA WPTS 680

Wide angle PTO shafts are used in the case where the fracture of relative position of the tractor power take off to the machine power input connection shaft can allow reaching up to 50° angles in every working moment and 80° angles temporary. These shafts allow the transfer of power constantly without having to drive off at the headland.



SAFETY CLUTCHES

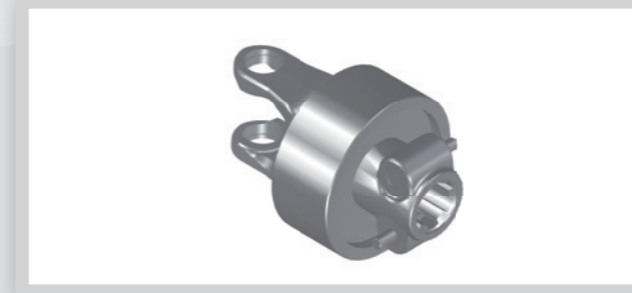
Basic and wide angle PTO shafts, depending on needs, may be equipped in the following safety clutches:

- overload clutch with scoops operating radially,
- overload automatic clutch,
- friction,
- friction and overrunning,
- clutch with shear bolt,
- overrunning.



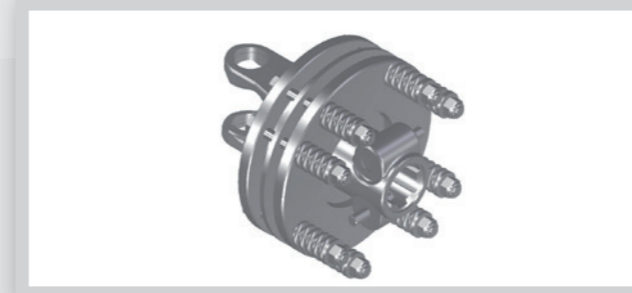
■ The overload clutch (SP)

with scoops operating radially operates by interrupting the drive transmission when the torque exceeds the clutch setting.



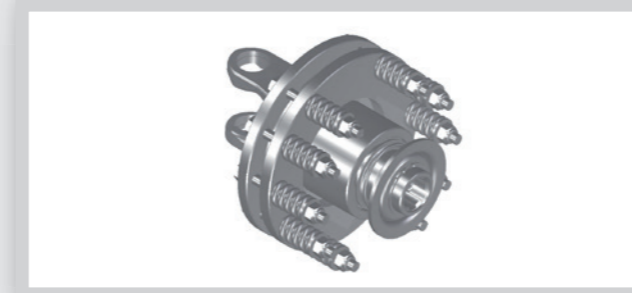
■ The overload automatic clutch (SPA)

is used to interrupt the power flow when the transmitted torque reaches a preset size. The clutch does not require the immediate shutdown of the drive at the time of the overload occurs.



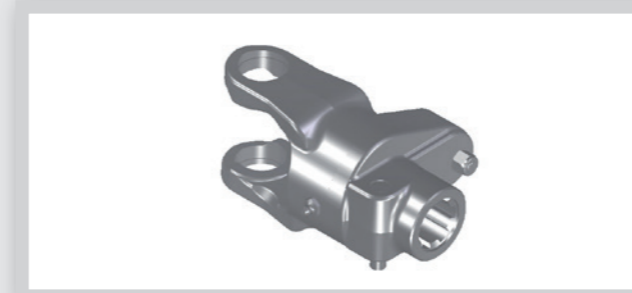
■ The friction clutch (SC)

transmits torque without switching off the drive when the overload reaches the set value. It can be used as a starting or overload clutch for machines with elements having high inertia.



■ The friction and overrunning clutch (SD)

allows for the torque transmission without switching of the drive, even under overload conditions exceeding the maximum clutch setting. At the same time, it allows the torque transmission in one direction only. It can be used for machines with elements having high inertia.



■ The clutch with shear bolt (SK)

protects the driveline against blockage and disconnects the torque transmission from the tractor when the torque exceeds the clutch setting which breaks the bolt.



■ The overrunning clutch (SJ)

transmits the torque in one direction only and is used in PTO shafts which drive machines with elements having high inertia (e.g. disc mowers).



MODEL		WPT 220	WPT 300	WPT 460	WPT 540	WPT 630	WPT 680	WPT 900	WPT 1200	WPT 1700	WPTS 680
Strenght parameters - 540 r.p.m.											
power	kW (HP)	12 (17)	17 (23)	26 (35)	31 (42)	36 (48)	38 (52)	51 (69)	68 (92)	96 (131)	38 (52)
torque	Nm	220	300	460	540	630	680	900	1200	1700	680
Strenght parameters - 1000 r.p.m.											
power	kW (HP)	19 (26)	26 (36)	40 (55)	47 (64)	55 (75)	59 (81)	79 (107)	105 (142)	146 (199)	59 (81)
torque	Nm	183	250	383	450	525	567	750	1000	1400	567
Max. dynamic torque	Nm	330	450	690	810	945	1020	1350	1800	2550	1020

HIGH QUALITY

The PTO shafts manufactured in SIPMA S.A. meet all the safety requirements comprised in European Union directives and passed tests in certified laboratories which authorises the manufacturer to place EC certificate also on these products.

CONFIGURATOR OF PTO SHAFTS

To select relevant shaft to machine model, we have created the Configurator of PTO shafts, available on our website - www.sipma.pl



CONFIGURATOR OF PTO SHAFTS - WWW.SIPMA.PL



TWO-YEAR WARRANTY



SIPMA S.A., ul. Budowlana 26, 20-469 Lublin, Poland
tel. (+48) 81 44 14 400, www.sipma.pl

Stamp of SIPMA Dealer



This publication is not an offer as construed by the Civil Code and is prepared for informative purposes only.
The producer reserves the right to introduce changes.